

Grace Construction Products

ADVANCED BUILDING ENVELOPE

Performance

FROM EVERY ANGLE.

GRACE

Seamless building protection *from a trusted global source.*

With today's innovative designs, reducing risk requires advanced envelope solutions that maximize building performance. Your building must perform flawlessly under a wide variety of conditions—year after year—while delivering ultimate moisture protection and long-term durability.

Count on Grace Construction Products for comprehensive solutions to protect your building envelope's integrity—as well as your own.

Grace is a single, trusted source for an array of durable, high-performance products—from below grade waterproofing to air barriers to roofing underlayments. We can provide a complete, integrated solution tailored to the specific requirements of your building design and application anywhere around the world.

With more than a 50-year track record of proven performance in high-profile projects worldwide, Grace offers you the most important feature of all: Confidence.

Integrated building envelope solutions tailored to your design.



Roofing Underlayments

No matter what the roof design, covering or climate, Grace has the right underlayment for the job.



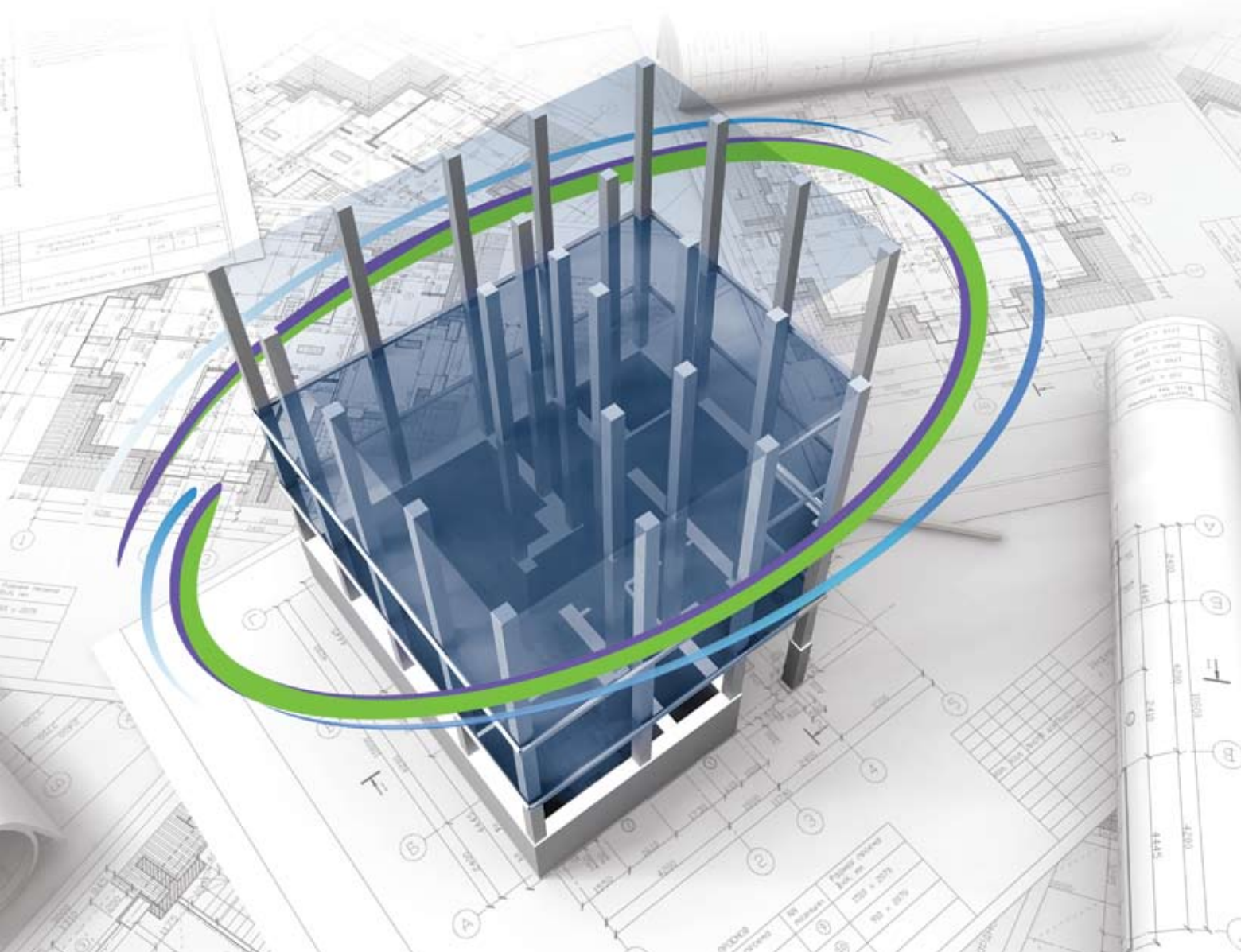
Air Barrier Systems

Advanced air barrier systems that provide continuous coverage for any wall design, in any climate.



Below Grade Waterproofing

Providing a continuous water barrier for virtually any design scenario.



Below Grade Waterproofing

Preventing below-grade water intrusion is critical for avoiding costly problems down the road.

Grace offers a comprehensive array of high-performance waterproofing systems that provide a continuous barrier to water and are fully-adhered to the structure.



Preprufe®

- Pre-applied waterproofing system ideal for blindside applications, including slabs and zero-property-line walls.
- Patented **Advanced Bond Technology™** ensures aggressive adhesion to concrete, preventing water ingress into the building.

Bituthene®

- The original peel-and-stick waterproofing solution.
- 50-year track record of successful installations around the world.

Procor®

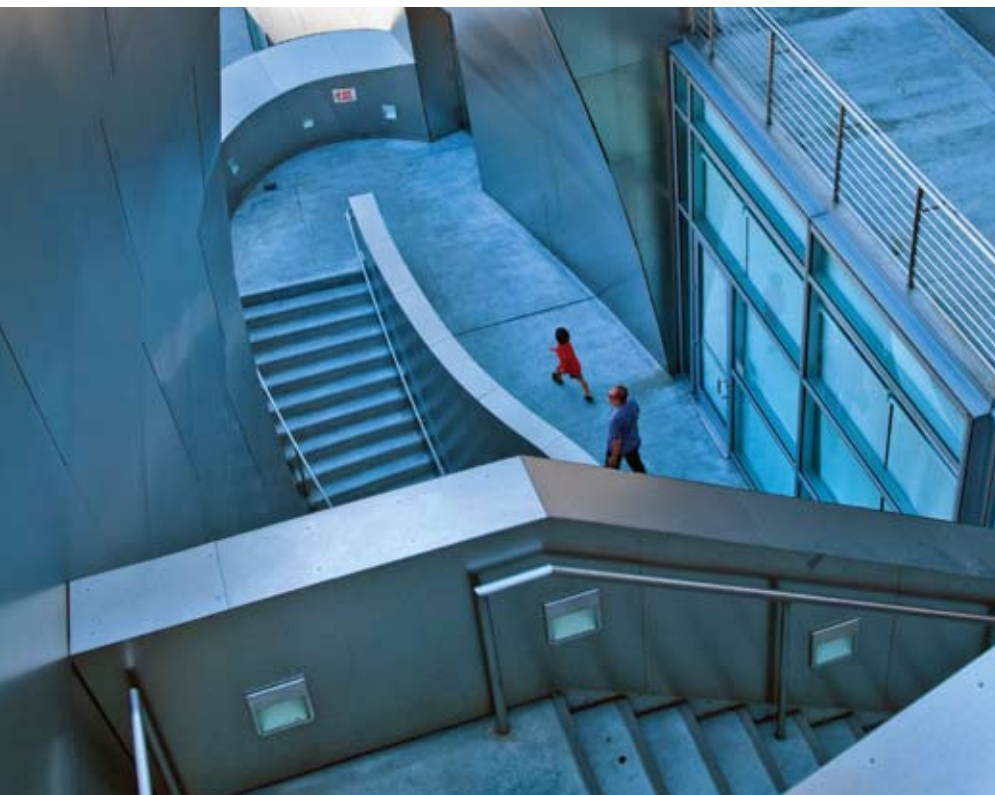
- One-pass, fluid-applied waterproofing membrane.
- Conforms to complex details, providing a seamless, flexible and fully-adhered waterproofing barrier.

Hydroduct®

- Complete drainage system, featuring sheet drainage composites and integrated high volume flow perimeter drainage.

Adcor®

- Specially engineered hydrophilic waterstop that prevents water from entering substructures through cold joints of concrete walls and floors.



A Comprehensive

Air Barrier Systems

Selecting the right air barrier is critical to wall performance. Grace air barrier systems enhance energy efficiency and prevent moisture problems, which help improve indoor air quality and protect long-term structural integrity. A study from the National Institute of Standards and Technology (NIST) shows that air barrier systems in non-residential buildings can reduce air leakage by up to 83% and energy consumption by up to 40%.*

Grace has you covered with a comprehensive portfolio of advanced air barrier systems that provide continuous coverage for any wall design, in any climate.



Perm-A-Barrier® VP/ VP LT (Low Temp)

- Fluid-applied, vapor-permeable, “breathable” air barrier.
- Conforms to complex and irregular shapes and geometries.

Perm-A-Barrier® Liquid

- Flexible, fluid-applied membrane.
- Provides a seamless air and vapor barrier.

Perm-A-Barrier® VPS

- Self-adhering, vapor permeable air barrier.
- Sheet membrane allows fast, easy application.

Perm-A-Barrier® Wall Membrane

- Self-adhering air and vapor barrier sheet membrane.
- Ensures long-lasting protection.

Perm-A-View™ Modeling Service

- Exclusive exterior wall modeling tool that quantifies energy efficiency, mold growth risks and corrosion risks of the wall assembly.
- Generates critical information to help optimize wall design and guide selection of proper air barrier material.

* NIST report “Investigation of the Impact of Commercial Building Envelope Airtightness on HVAC Energy Use”, Steven J. Emmerich, Tim McDowell, Wagdy Anis; June 2005

Roofing Underlayments



Building owners want roofs that are aesthetically attractive, while offering exceptional durability, energy efficiency, and lower total cost of ownership. Specifying a roofing underlayment properly matched to the demands of the roof design is a critical factor in its long-term performance.

Grace helps architects address that challenge with a comprehensive portfolio of high-performance roofing underlayments capable of meeting the requirements of any application. No matter what the roof design, roof covering or climate, Grace has the right underlayment for the job.



Grace Ultra

- Advanced butyl rubber technology designed to deliver extreme temperature resistance—up to 300° F.
- Ideal for use with copper, zinc and Cor-Ten® roof coverings.

Grace Ice & Water Shield® HT

- Premium product specifically designed for high-temperature applications.
- Delivers exceptional waterproofing performance and durable adhesion.
- Thermal resistance up to 260° F with 120 days of UV exposure.

Grace Ice & Water Shield®

- The leading self-adhered membrane with 30 years of proven performance.
- Delivers leak protection against ice dams and wind-driven rain.
- Thermal resistance up to 180° F.

Maximum Building Envelope Performance.



World-class expertise

available across the globe.

The sun never sets on Grace Construction Products. Our global team works around the world and across international borders to help customers achieve their goals. Our experts have the professional relationships, infrastructure and specialized knowledge in a broad range of construction segments to provide support throughout the entire project delivery process.

Grace is committed to customer support excellence. From building envelope details and wall design simulations using our proprietary Perm-A-View™ exterior wall modeling tool, to energy efficiency and LEED compliance, we are always available to help.



Combining striking, innovative design with the durability of Grace products, the Walt Disney Concert Hall has set a new standard for building envelope performance.

Architectural photography of the Walt Disney Concert Hall by David Zanzinger.



Grace supplies products to more than 120 countries worldwide, through its plants and facilities in more than 40 countries, supported by a team of almost 6,000 people.

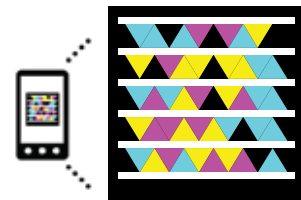
Grace maintains sales offices in every major metropolitan area. To contact your local Grace Specialty Building Materials representative, or to obtain additional product information, call:

866-333-3SBM (3726)

GRACE

Adcor, Bituthene, Grace Ice & Water Shield, Hydroduct, Perm-A-Barrier and Preprufe are trademarks of W. R. Grace & Co.-Conn registered in the United States and other countries. Perm-A-View is a trademark of W. R. Grace & Co.-Conn. Procor is a trademark of W. R. Grace & Co.-Conn. registered in the United States, and is used in Canada under license from PROCOR LIMITED.

We hope the information here will be helpful. It is based on data and knowledge considered to be true and accurate and is offered for the user's consideration, investigation and verification, but we do not warrant the results to be obtained. Please read all statements, recommendations and suggestions in conjunction with our Conditions of Sale which apply to all goods supplied by us. No statement, recommendation or suggestion is intended for any use which would infringe any patent or copyright. W. R. Grace & Co.-Conn., 62 Whittemore Avenue, Cambridge, MA 02140. In Canada, Grace Canada, Inc., 294 Clements Road West, Ajax, Ontario, Canada L1S 3C6.



Get the free mobile app at
<http://gettag.mobi>