

INSULATION, TYPE AND PLACEMENT DETERMINED BY OTHERS (SEE NOTE A)

GYPSUM BOARD

CONCRETE FLOOR

CONCRETE FOUNDATION WALL

MASONRY VENEER

EXTERIOR SHEATHING

PERM-A-BARRIER® WALL MEMBRANE

BITUTHENE® LIQUID MEMBRANE

PERM-A-BARRIER WALL FLASHING (OVERLAP WATER-PROOFING MIN. 4 IN.)

PERM-A-BARRIER WALL FLASHING BACK 1/2 IN. FROM BRICK FACE

METAL DRIP EDGE SET IN SEALANT. HEIGHT ABOVE SOIL PER LOCAL CODE. WEEPS AT 16 IN. O.C.

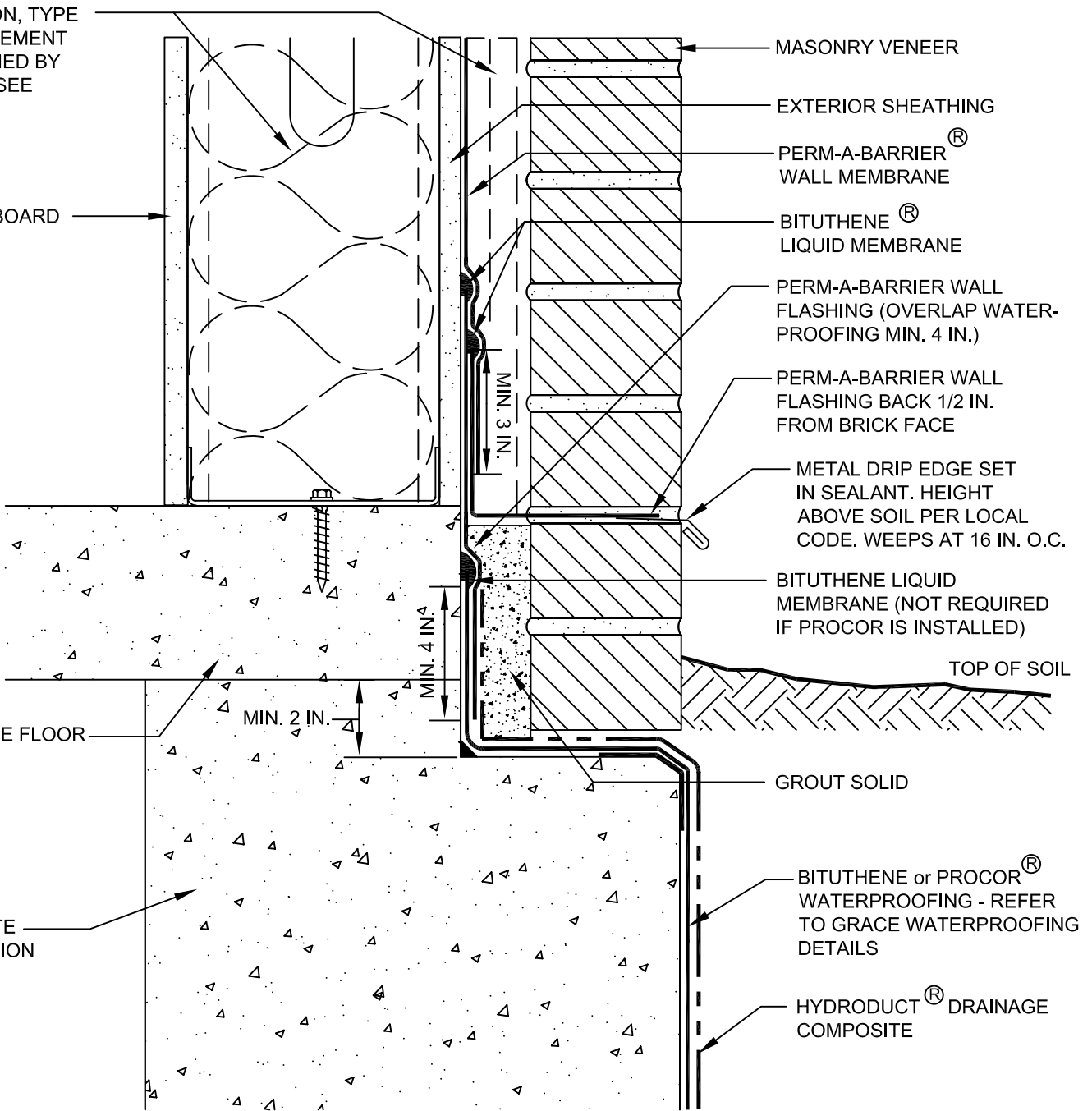
BITUTHENE LIQUID MEMBRANE (NOT REQUIRED IF PROCOR IS INSTALLED)

TOP OF SOIL

GROUT SOLID

BITUTHENE or PROCOR® WATERPROOFING - REFER TO GRACE WATERPROOFING DETAILS

HYDRODUCT® DRAINAGE COMPOSITE



- Important Notes:**
- A. Detail not suitable for all climates. Avoiding excessive moisture accumulation in exterior walls is dependent on many factors including proper placement of insulation and air and vapor barriers in the wall. For assistance with exterior wall design, consult with a building science professional or a Grace representative.
 - B. To ensure a continuous air barrier across the building envelope, a fully continuous connection should be made to the roof system and Grace waterproofing system.
 - C. Ensure window system is properly aligned with wall insulation and installed per the window manufacturer's recommendations to ensure continuity of the air barrier system.
 - D. Install all Grace products in accordance with Grace Product Data Sheets and Grace recommendations.

GRACE
Construction Products
www.graceconstruction.com
toll free 866-333-3726

Foundation - Option B

Perm-A-Barrier® Wall Membrane Air Barrier System

DRAWING: PWM - 011

SCALE: Not to scale

EFFECTIVE DATE: 04/10/2007

Supersedes: NEW