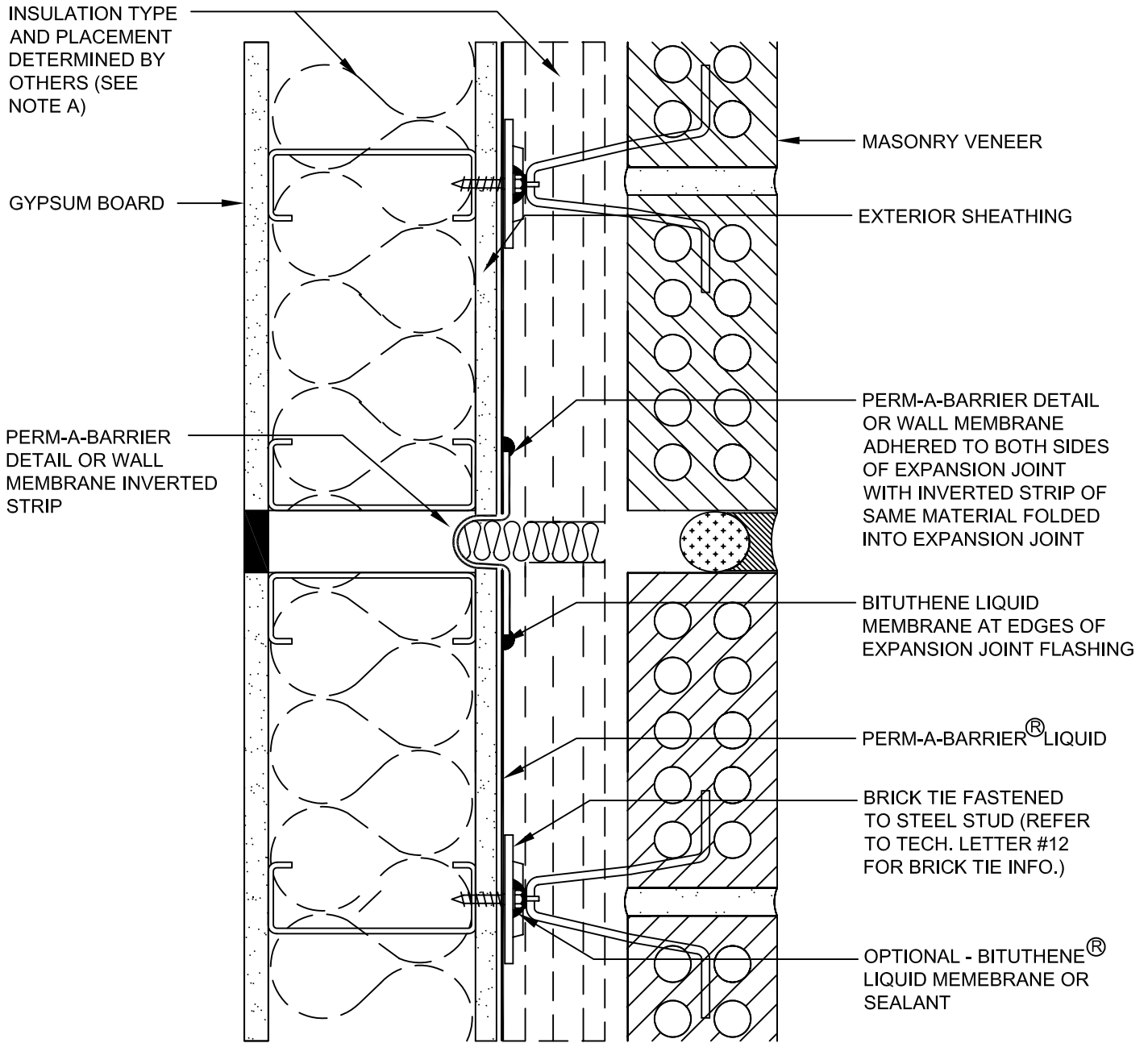


PLAN VIEW



- Important Notes:**
- A. Detail not suitable for all climates. Avoiding excessive moisture accumulation in exterior walls is dependent on many factors including proper placement of insulation and air and vapor barriers in the wall. For assistance with exterior wall design, consult with a building science professional or a Grace representative.
  - B. To ensure a continuous air barrier across the building envelope, a fully continuous connection should be made to the roof system and Grace waterproofing system.
  - C. Ensure window system is properly aligned with wall insulation and installed per the window manufacturer's recommendations to ensure continuity of the air barrier system.
  - D. Install all Grace products in accordance with Grace Product Data Sheets and Grace recommendations.

**GRACE**  
 Construction Products  
 www.graceconstruction.com  
 toll free 866-333-3726

**Expansion Joint**  
**Perm-A-Barrier<sup>®</sup> Liquid Air Barrier System**

DRAWING: PLQ - 016

SCALE: Not to scale

EFFECTIVE DATE: 08/16/2007

Supersedes: NEW