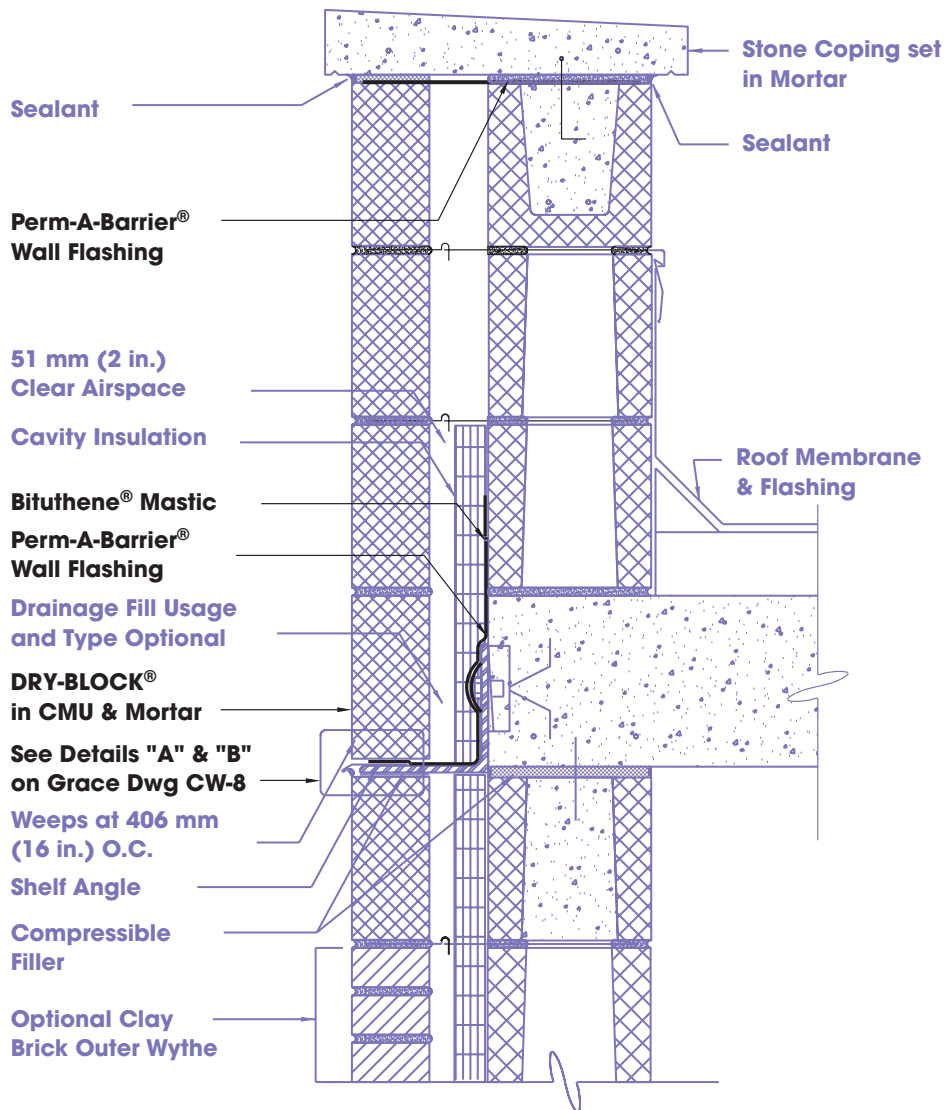


# Parapet Detail

CW-6



## Installation Instructions

This detail has been created based on the use of DRY-BLOCK® Integral Water-repellent Admixture in all concrete masonry units, and DRY-BLOCK Integral Water-repellent Mortar Admixture in all mortar. The DRY-BLOCK admixtures work by “coating the internal pores” of the concrete and mortar so water cannot wick through them by capillary action. Since the DRY-BLOCK admixtures are not surface treatments, the cores and the interior face of the wall are just as water-repellent as the exterior face of the wall.

Increasingly, designers are choosing to dampproof the inner wythe in cavity wall construction by specifying backup concrete masonry units and mortar containing the DRY-BLOCK Integral Water-repellent System. Less expensive than the most-frequently-used methods of asphaltic dampproofing, the DRY-BLOCK System eliminates a field-labor step in the construction process. And since the DRY-BLOCK System is not a surface treatment like asphaltic dampproofing, the cores and the interior face of the backup are just as water-repellent as the exterior face.

A two inch clear airspace allows the mason to keep the back of mortar joints of the outer wythe free and clear of mortar fins and assures that any water which does get into the cavity will drain down to the flashing.

This detail has been created based on the use of Perm-A-Barrier® Wall Flashing. Perm-A-Barrier is a 40 mil thick flashing consisting of fully-adhered, rubberized asphalt with a strong 8 mil cross-laminated polyethylene top surface. Since the flashing is self-adhered to the substrate, water cannot migrate behind it.

Most frequently, in cavity wall construction the backup wythe goes up some time before the outer wythe. In that situation non-adhered flashing products, which must be secured in the mortar joint of the backup wythe, are installed when that wythe is laid up. Therefore, such products are subjected to damage by the elements and by the construction process until the outer wythe is erected. Since Perm-A-Barrier Wall Flashing is adhered to the face of the backup wythe, it is installed when the outer wythe is erected, eliminating the risk of damage. A bead of Bituthene® is run along the top edge of the flashing on the backup wythe to enable it to shed any water running down that wythe onto the polyethylene flashing surface and to the weeps. Perm-A-Barrier Wall Flashing works equally well with steel stud & sheathing backup – contact your Grace representative regarding sheathing types.


Perm-A-Barrier Wall Flashing should be trimmed 13 mm (1/2 in.) back from the face of the wall and the use of a stainless steel drip edge is recommended by most masonry experts.

Although the type of weep is optional, the placement of weeps immediately above the flashing is imperative.

Joint reinforcement must be selected and placed according to code requirements.

The design and connection of the floor or roof slab and the wall is a matter of engineering judgment and code requirements.

Selection of coping material and style chosen are primarily aesthetic and optional. However, it should be the responsibility of the mason to place the flashing atop the masonry wall, even if a metal coping is to be installed by others.

 Visit our web site at: [www.graceconstruction.com](http://www.graceconstruction.com)

 printed on recycled paper

W. R. Grace & Co. - Conn. 62 Whittemore Avenue Cambridge, MA 02140

DRY-BLOCK, Perm-A-Barrier and Bituthene are registered trademarks of W. R. Grace & Co. - Conn.

We hope the information here will be helpful. It is based on data and knowledge considered to be true and accurate and is offered for the users' consideration, investigation and verification, but we do not warrant the results to be obtained. Please read all statements, recommendations or suggestions in conjunction with our conditions of sale, which apply to all goods supplied by us. No statement, recommendation or suggestion is intended for any use which would infringe any patent or copyright. W. R. Grace & Co. - Conn., 62 Whittemore Avenue, Cambridge, MA 02140. In Canada, Grace Canada, Inc., 294 Clements Road, West, Ajax, Ontario, Canada L1S 3C6.

This product may be covered by patents or patents pending. Copyright 2000. W. R. Grace & Co. - Conn. MP-607 Printed in USA 8/00 FA/GPS/500

**GRACE**  
Construction Products