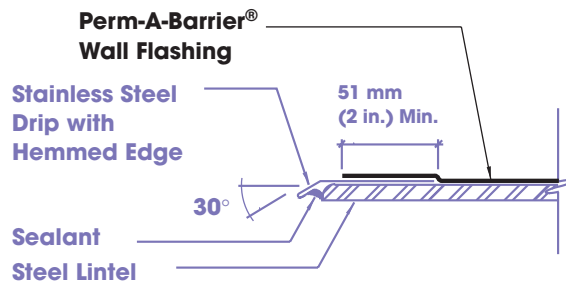
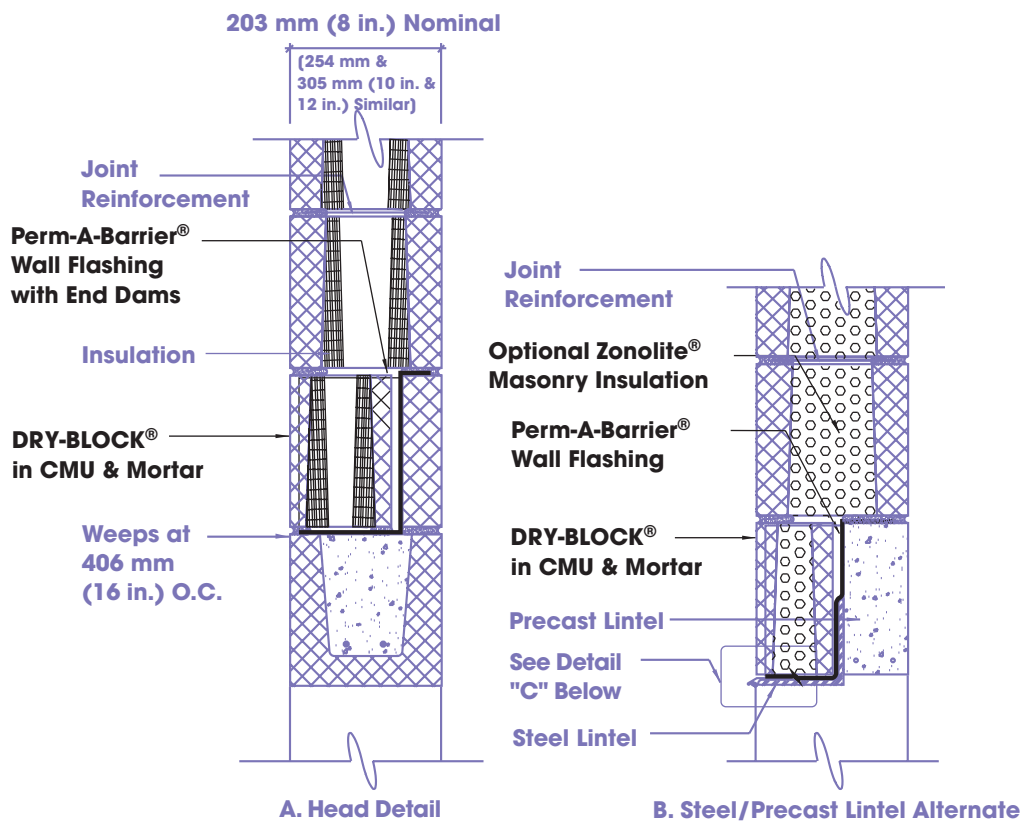


Masonry Opening Head Flashing

SW-5



C. Stainless Steel Drip Edge Detail

Installation Instructions

This detail has been created based on the use of DRY-BLOCK® Integral Water-repellent Admixture in all concrete masonry units, and DRY-BLOCK Integral Water-repellent Mortar Admixture in all mortar. The DRY-BLOCK admixtures work by “coating the internal pores” of the concrete and mortar so water cannot wick through them by capillary action. Since the DRY-BLOCK admixtures are not surface treatments, the cores and the interior face of the wall are just as water-repellent as the exterior face of the wall.

Just as in cavity walls, it is important in single wythe walls to allow any water which does get into the wall to drain down to the flashing, where it will be collected, and exit through the weeps. In insulated single wythe walls this concept of drainability can only be achieved through the use of insulations which do not absorb large quantities of water, and which do not block the cores of the concrete masonry units.

This detail has been created based on the use of Perm-A-Barrier® Wall Flashing. Perm-A-Barrier is a 40 mil thick flashing consisting of fully-adhered, rubberized asphalt with a strong 8 mil cross-laminated polyethylene top surface. Since the flashing is self-adhered to the substrate, water cannot migrate behind it. The flashing membrane should be trimmed 13 mm (1/2 in.) back from the faces of the wall and the use of a stainless steel drip edge is recommended by most masonry experts.

If cotton weep cords or tubular weeps are used, they should be located at cores of concrete masonry units. Other types of weeps should be placed at head joints.

Joint reinforcement must be selected and placed according to code requirements.



Visit our web site at: www.graceconstruction.com



printed on recycled paper

W. R. Grace & Co. - Conn. 62 Whittemore Avenue Cambridge, MA 02140

DRY-BLOCK, Perm-A-Barrier and Zonolite are registered trademarks of W. R. Grace & Co. - Conn.

We hope the information here will be helpful. It is based on data and knowledge considered to be true and accurate and is offered for the users' consideration, investigation and verification, but we do not warrant the results to be obtained. Please read all statements, recommendations or suggestions in conjunction with our conditions of sale, which apply to all goods supplied by us. No statement, recommendation or suggestion is intended for any use which would infringe any patent or copyright. W. R. Grace & Co. - Conn., 62 Whittemore Avenue, Cambridge, MA 02140. In Canada, Grace Canada, Inc., 294 Clements Road, West, Ajax, Ontario, Canada L1S 3C6.

This product may be covered by patents or patents pending. Copyright 2000. W. R. Grace & Co. - Conn. MP-506 Printed in USA 8/00 FA/GPS/500

GRACE
Construction Products